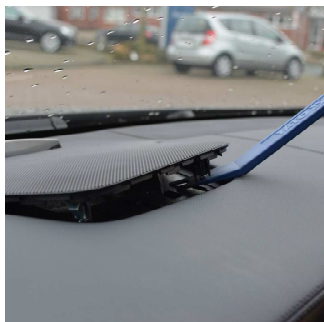




Art.-Nr.: **29188x**  
item#


## Navi MB CLS ab 01/2011




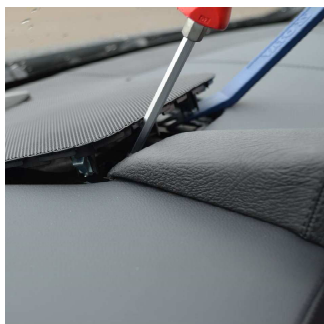
 Lautsprecherabdeckung lösen  
Bitte benutzen Sie nur ein Kunststoff-Werkzeug!


 Loosen speaker cover  
Please use only plastic tools!




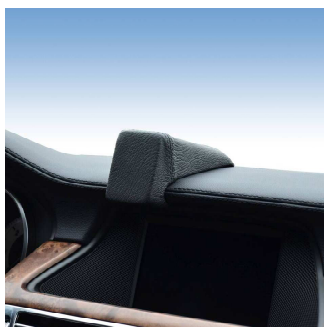
 Konsole wie abgebildet positionieren

 Position console as illustrated




 Beiliegende Schraube durch das Blech eindrehen

 Install enclosed screw through metal plate



 Alle Bauteile wieder montieren

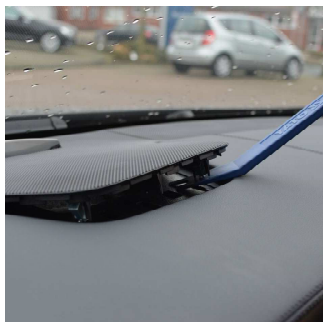
 To remount all component parts



Änderungen vorbehalten Subject to change

Art. 29188x

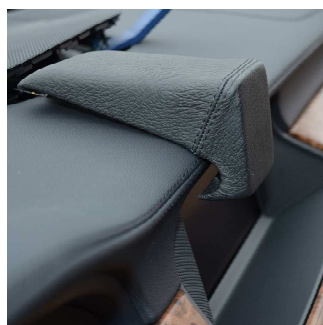
## Navi MB CLS ab 01/2011



Enlevez la couverture d'haut-parleur  
Veuillez n'utiliser qu'un outil de matière plastique



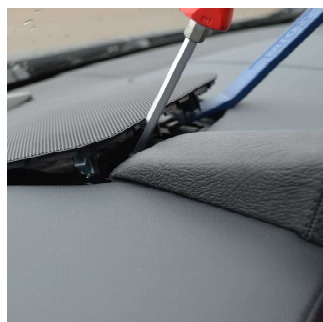
Suelte el revestimiento del altavoz  
Use sólo herramientas de plástico!



Positionnez la console comme illustré



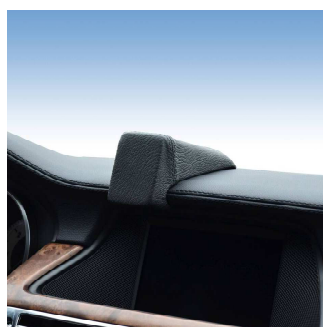
Posicione la consola como mostrado



Vissez la vis ci-jointe à travers la tôle



Instale el tornillo adjunto por la chapa



Remontez les éléments de construction

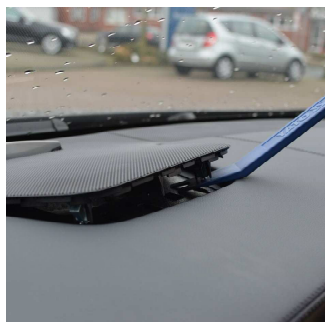


Remonte todos partes de construcción



Art. **29188x**

## Navi MB CLS ab 01/2011



Luidsprekerpaneel losmaken  
Alleen plastic gereedschap gebruiken alstublieft!



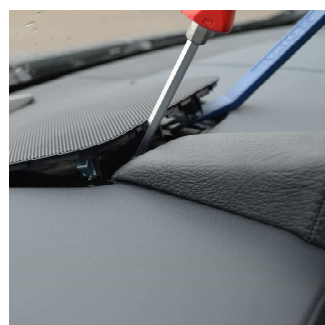
Pokrywe glosnika zdemontowac  
Prosze uzywac tylko narzedzi z tworzywa sztucznego.



Konsole zoals afgebeeld positioneren



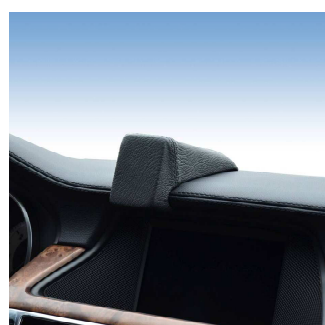
Uchwyt umiescic jak na przedstawionym zdjeciu.



Meegelverde schroef door de metalen plaat draain



Zalaczona srube przez blache wkręcic



Remonte todos partes de construcción



Wszystkie elementy ponownie zamontowac

